

Advanced- Faster, Quieter, Automatic Cotton Inserting

The CS2 is the second generation of cotton inserters manufactured by Deitz Company. Compared to the CS1, the CS2 has more automatic adjustments, quieter operation, higher speed and a fixed turret position over the conveyor. Design improvements enhance performance and make adjustments easier. The CS2 is used with natural cotton and rayon supplied as continuous coil. It separates the coil into a plug by pulling the cotton coil apart between two pairs of servo motor driven pinch rollers- no sharp cutting blades. The plug is formed into an inverted -U- shape



and inserted into a bottle by an air cylinder. A 4-tube turret carries the plug from the loading station, 180° to the inserting station. Three different size turret tube assemblies are available to optimize inserting speed. The CS2 normally comes with the LPC2 motor operated lift platform, bottle indexing air cylinders and bottle position sensors. Sensors monitor bottle position and cotton status and will stop the machine if conditions are incorrect. Deitz Company can provide the conveyor or it can be used with any existing flush side conveyor. For cotton inserting rates of 150+ two CS2's can be used in series on a single lane conveyor.

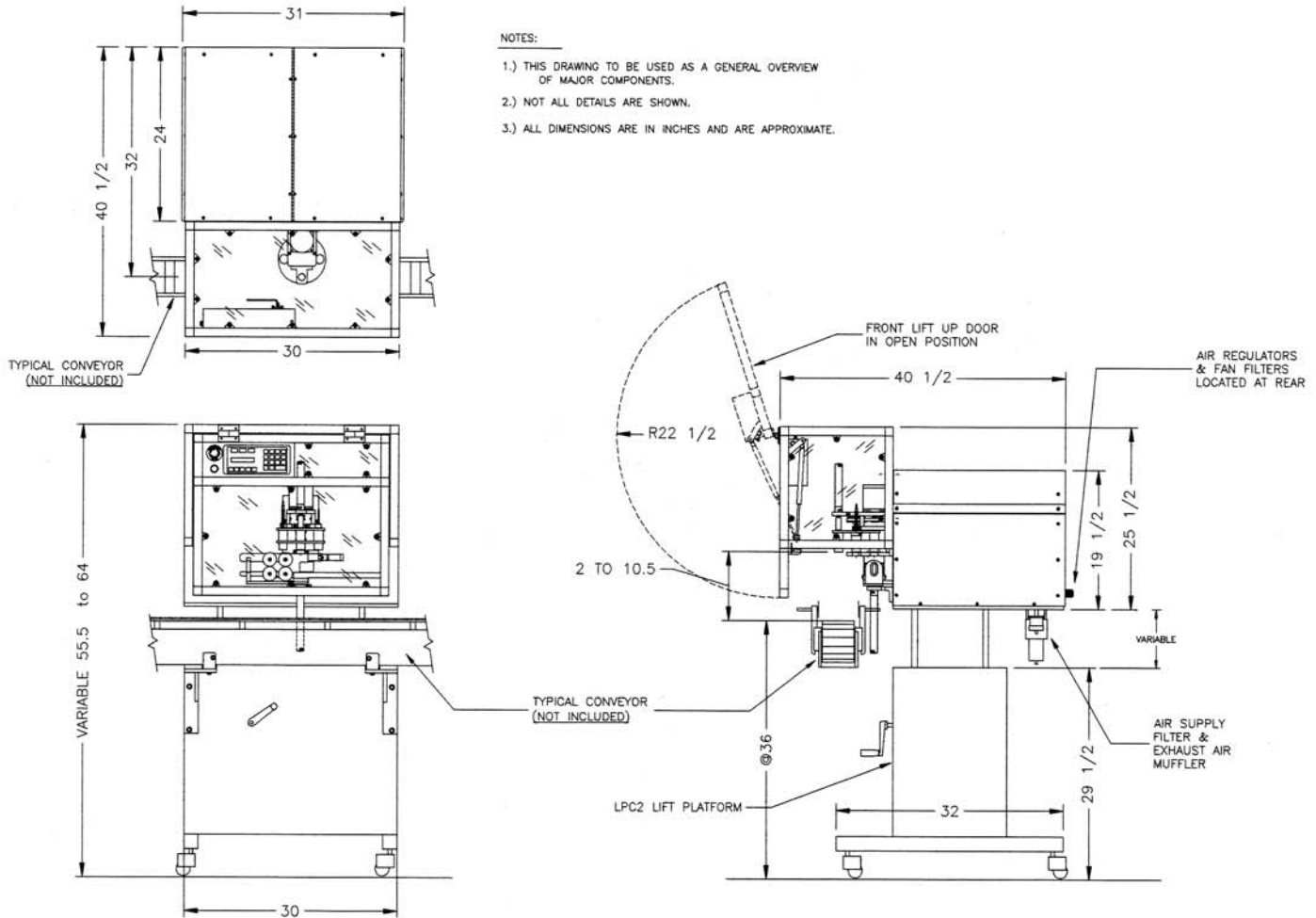
**LIMITED
2-YEAR
WARRANTY**

Designed and Manufactured in the USA by

DEITZ™
COMPANY INC.

MODEL CS2

FULLY AUTOMATIC COTTON INSERTER-UPGRADED



- Model CS2 Cottoner
- Electrical 115 VAC 15A 60 HZ
- Air 1.0 cfm @ 80 psi
- Weight 450 lbs
- Automatic Cotton Inserter with Adjustable Lift Platform
- Capable of up to 90 Inserts per minute (Short Turret)
- Capable of up to 80 Inserts per minute (Long Turret)
- Uses Roller Tear Method, No Sharp Blades
- Two-Line Operator Display and Control Panel Simplifies Operation

- Fully Automatic Length Adjustment
- Automatic Bottle Indexing Components Included
- Motorized Height Adjustment
- For Natural Cotton, Rayon, Polyester Coil Products, Most Sizes & Weights
- Produces Lengths of 2 to 8 Inches
- Insert up to 9 Pieces per Container
- Automatically Detects Missing Cotton and Bottle Backups
- Handle Containers as High as 10 Inches
- Clear Insertion Tubes for Easy Operator Verification of Performance
- Polycarbonate Enclosure with Interlocked Guard Door

- Rollers Automatically Open and Close as Needed
- Optional Secondary Tamper Available
- Automatic or Manual Operation
- Batch Counter Feature
- "Clear Tubes", "Extend Rods" and "1-Step Index" Functions Simplify Bottle Setup
- "Index Only" Function for Containers that Do Not Require Cotton
- Interchangeable Turrets and Cylinder Configurations Available
- Modular Construction for Easy Service