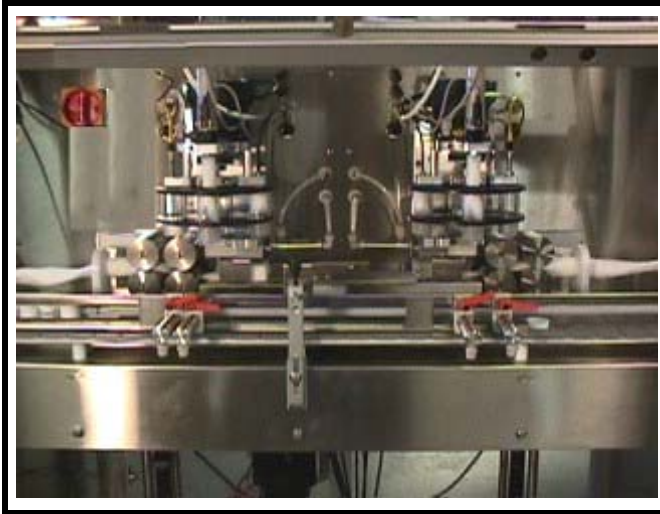


MODEL CS10

DUAL HEAD AUTOMATIC COTTONER



- *Hi-speed roller tear method*
- *180 per minute (up to 5 inch)*
- *160 per minute (up to 9 inch)*
- *Automatic set-up, easy loading*
- *Motorized height adjustment*
- *No cotton or no bottle = no fill*
- *Operator Interface Panel with two-line text display*
- *Many convenience features*
- *Two-year limited warranty*

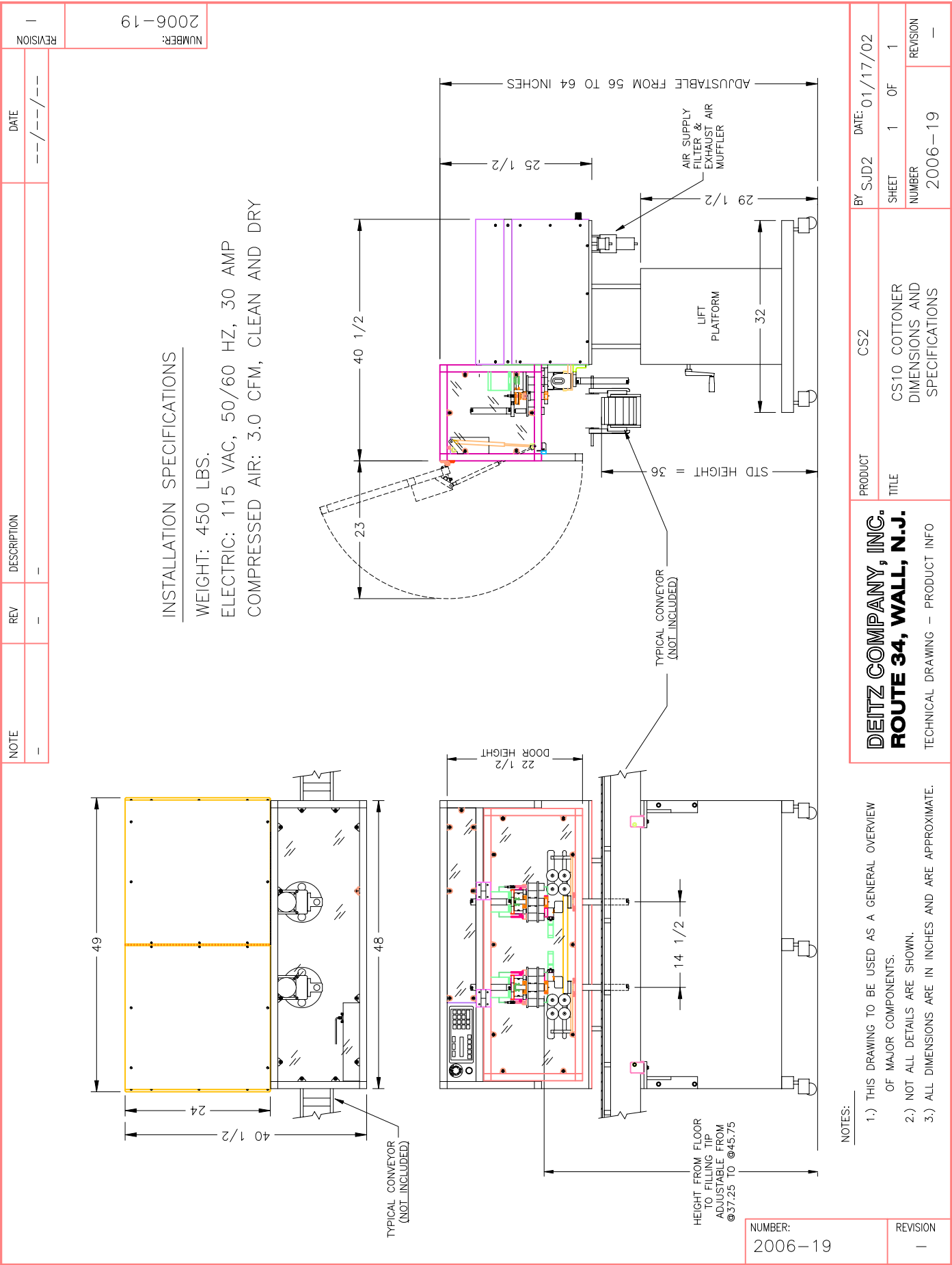
Advanced, Fast, Affordable Cotton Inserting

The Model CS10 Automatic Cotton Inserter uses the latest technology to provide fast and reliable results with easy set-up and operation. High speeds are achieved through the use of two filling heads working in tandem, so two containers are filled at once. Speeds of up to 180 containers per minute can be achieved with most grades and materials of coil (cotton, rayon or polyester), with pieces up to 5 inches long. For pieces from 5 to 9 inches long, the speed is up to 160 per minute. Set-up and operation are automatic, using the membrane touch panel and following the text instruction. All rotating components are controlled by stepping motors and the machine height adjustment is also motorized. Container indexing components are provided, so the CS10 can be rolled up to the conveyor and operating at speed in a very short time. Coil change over is equally simple.

Designed and Manufactured in the USA by

DEITZ™
COMPANY INC.

1750 Route 34, PO Box 1108, Wall, NJ 07719, USA (732) 681-0200



Advanced- Faster, Quieter, Automatic Cotton Inserting

The CS2 is the second generation of cotton inserters manufactured by Deitz Company. Compared to the CS1, the CS2 has more automatic adjustments, quieter operation, higher speed and a fixed turret position over the conveyor. Design improvements enhance performance and make adjustments easier. The CS2 is used with natural cotton and rayon supplied as continuous coil. It separates the coil into a plug by pulling the cotton coil apart between two pairs of servo motor driven pinch rollers- no sharp cutting blades. The plug is formed into an inverted -U- shape



and inserted into a bottle by an air cylinder. A 4-tube turret carries the plug from the loading station, 180° to the inserting station. Three different size turret tube assemblies are available to optimize inserting speed. The CS2 normally comes with the LPC2 motor operated lift platform, bottle indexing air cylinders and bottle position sensors. Sensors monitor bottle position and cotton status and will stop the machine if conditions are incorrect. Deitz Company can provide the conveyor or it can be used with any existing flush side conveyor. For cotton inserting rates of 150+ two CS2's can be used in series on a single lane conveyor.

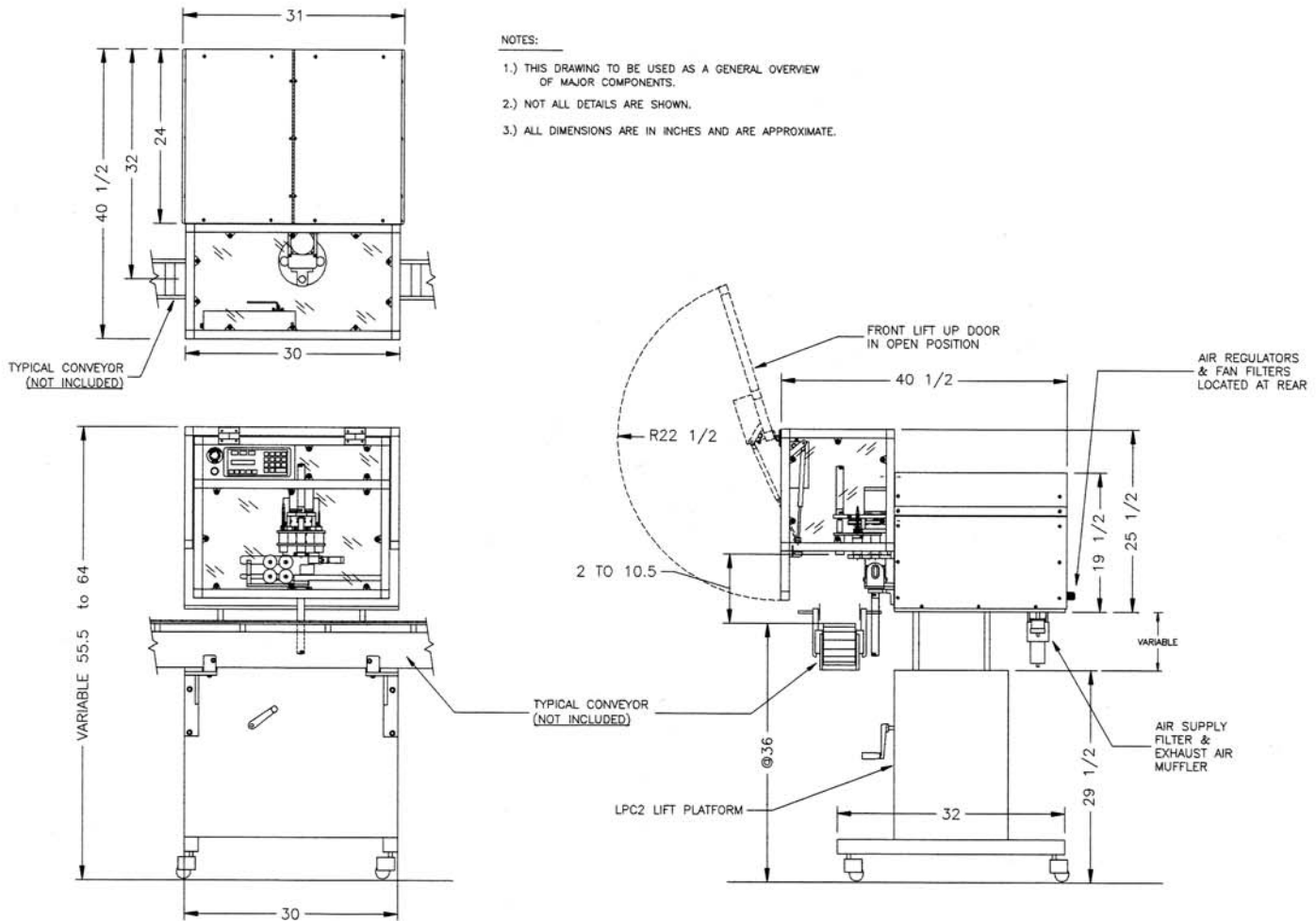
**LIMITED
2-YEAR
WARRANTY**

Designed and Manufactured in the USA by

DEITZ™
COMPANY INC.

MODEL CS2

FULLY AUTOMATIC COTTON INSERTER-UPGRADED



- *Model CS2 Cottoner*
- *Electrical 115 VAC 15A 60 HZ*
- *Air 1.0 cfm @ 80 psi*
- *Weight 450 lbs*
- *Automatic Cotton Inserter with Adjustable Lift Platform*
- *Capable of up to 90 Inserts per minute (Short Turret)*
- *Capable of up to 80 Inserts per minute (Long Turret)*
- *Uses Roller Tear Method, No Sharp Blades*
- *Two-Line Operator Display and Control Panel Simplifies Operation*

- *Fully Automatic Length Adjustment*
- *Automatic Bottle Indexing Components Included*
- *Motorized Height Adjustment*
- *For Natural Cotton, Rayon, Polyester Coil Products, Most Sizes & Weights*
- *Produces Lengths of 2 to 8 Inches*
- *Insert up to 9 Pieces per Container*
- *Automatically Detects Missing Cotton and Bottle Backups*
- *Handle Containers as High as 10 Inches*
- *Clear Insertion Tubes for Easy Operator Verification of Performance*
- *Polycarbonate Enclosure with Interlocked Guard Door*

- *Rollers Automatically Open and Close as Needed*
- *Optional Secondary Tamper Available*
- *Automatic or Manual Operation*
- *Batch Counter Feature*
- *"Clear Tubes", "Extend Rods" and "1-Step Index" Functions Simplify Bottle Setup*
- *"Index Only" Function for Containers that Do Not Require Cotton*
- *Interchangeable Turrets and Cylinder Configurations Available*
- *Modular Construction for Easy Service*

Simple, Reliable, Affordable Automatic Cotton Inserting



Model CS1 Cotton Inserter



Close-up of insertion area

The CS1 Cotton Inserter converts cotton or synthetic coil into short lengths, forms these lengths into an "inverted U" shape and inserts them into bottles.

First, the coil is pulled apart into a short length by feeding through two pairs of pinch rollers. This short piece is then folded and inserted up into a tube, forming the "inverted U". The tube then moves over the bottle and the piece is inserted down into the bottle.

The CS1 boasts several innovations which make it superior to other cottoners, including spring-loaded rollers which feed almost any size or grade of cotton or synthetic coil without adjustment... exclusive "cotton fingers" which center the piece before it is inserted up into the tube, and a 4-tube turret for smooth, error-proof operation.

Features:

- * Handles most weights and grades of continuous coil material, including cotton, rayon and polyester.
- * Produces piece lengths from 2" to 9" (straight length before folding).
- * Inserts one piece or many (up to 10 pieces per bottle).
- * "No Cotton" sensor prevents unfilled bottles.
- * Produces from 60 to 90 pieces per minute.
- * Counts number of bottles filled.
- * Selectable fully automatic or manual modes.
- * Includes full auto-indexing components for conveyor line.
- * Includes sensors to detect the bottle to be filled and any bottles backed up down line.
- * Includes clear plastic front guard with safety interlock to protect operator.
- * Microprocessor control with flat panel operator interface
- * All contact parts stainless steel or delrin

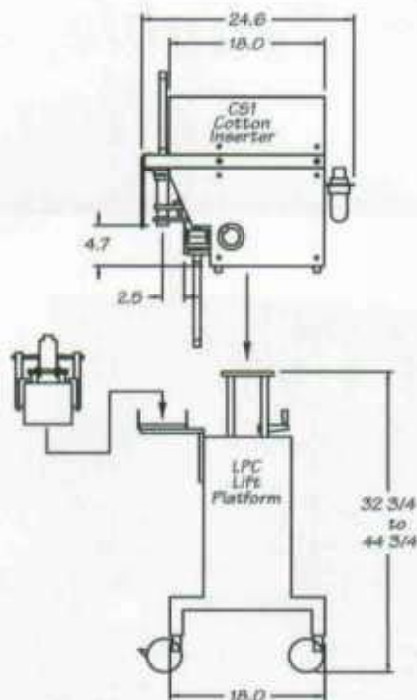
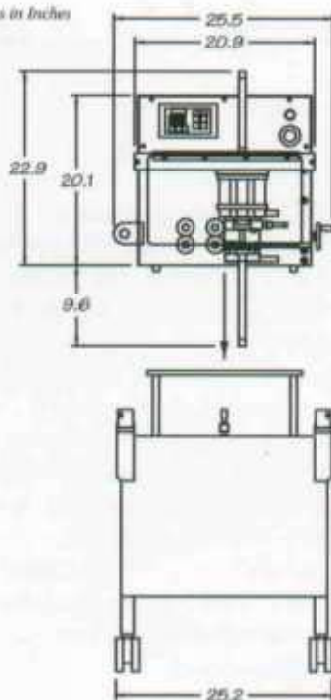
Designed and Manufactured in the USA by

DEITZ
COMPANY INC.

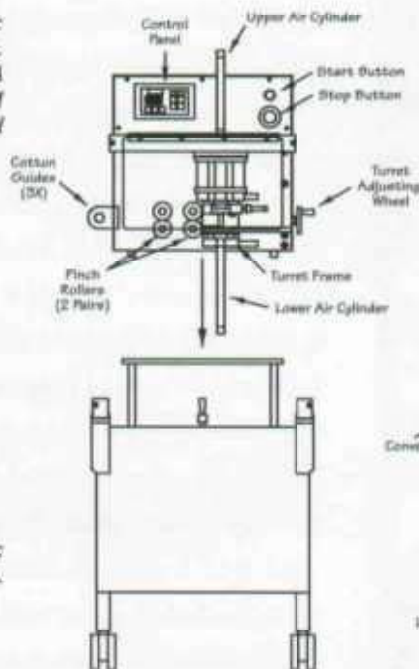
MODEL CS1

COTTON INSERTER & LPC LIFT PLATFORM

Dimensions in Inches



CS1 Specifications:
 Weight/160 lbs.
 Electrical/110VAC 7A
 AIR/35 PSI, 40 CFM
 Filter/Regulator Included



LPC Specifications:
 Weight/100 lbs.

