

USE THIS SCHEMATIC FOR ALL MODEL CS1 TYPE AD0953-1 AND UP (SER. NO 177 AND UP). THESE USE ANAHEIM AUTOMATION DRIVE/TRANSFORMER, TRANSFORMER AND STEPPER MOTOR.

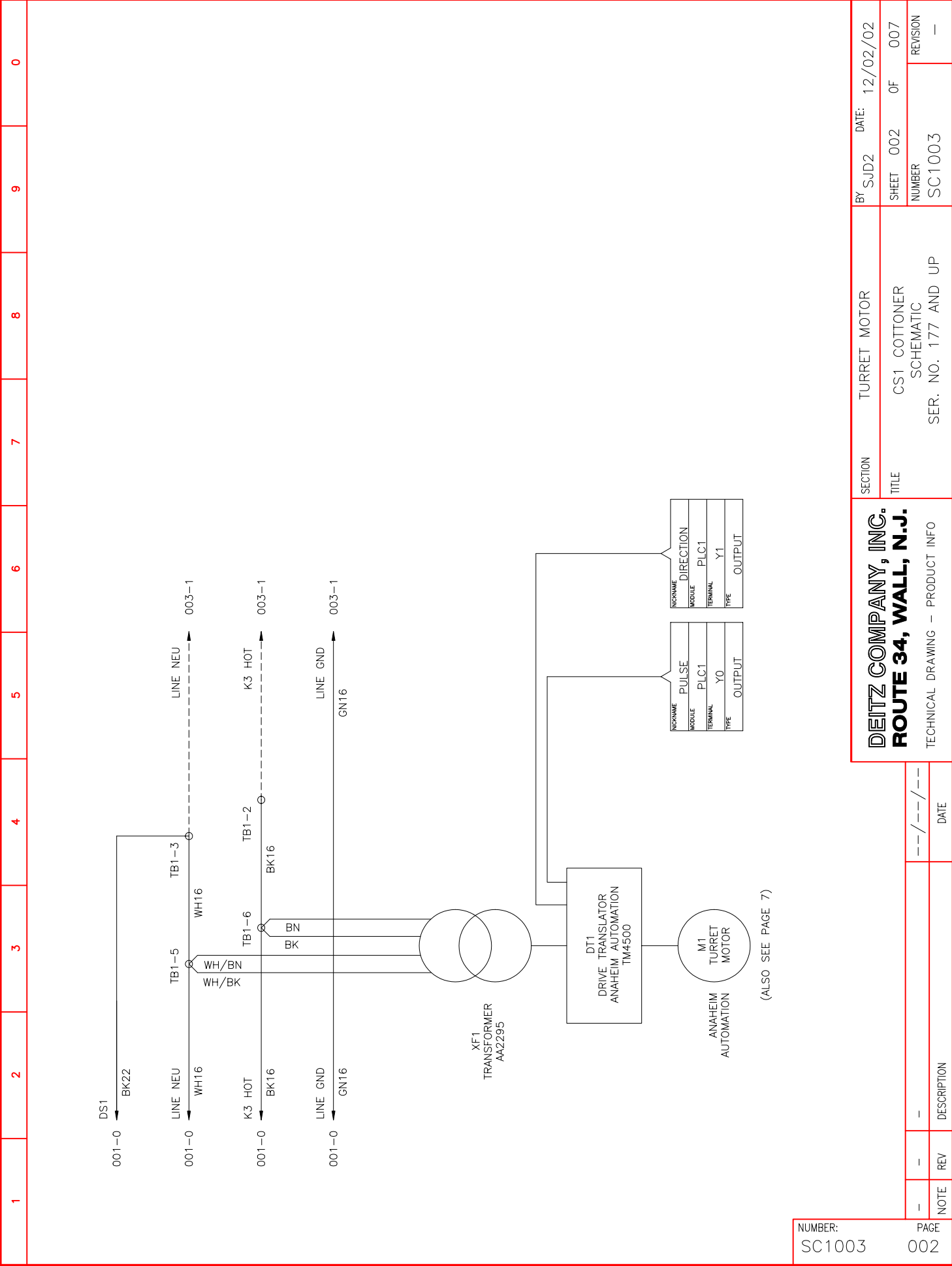
NUMBER	PAGE
SC1003	001

NOTE	REV	DESCRIPTION	DATE
-	-	-	--/--/---

DEITZ COMPANY, INC.
ROUTE 34, WALL, N.J.
 TECHNICAL DRAWING - PRODUCT INFO

SECTION MAIN POWER
 TITLE CS1 COTTONER SCHEMATIC
 SER. NO. 177 AND UP

BY SJD DATE: 12/02/02
 SHEET 001 OF 007
 NUMBER SC1003
 REVISION -



NUMBER: SC1003 PAGE 002

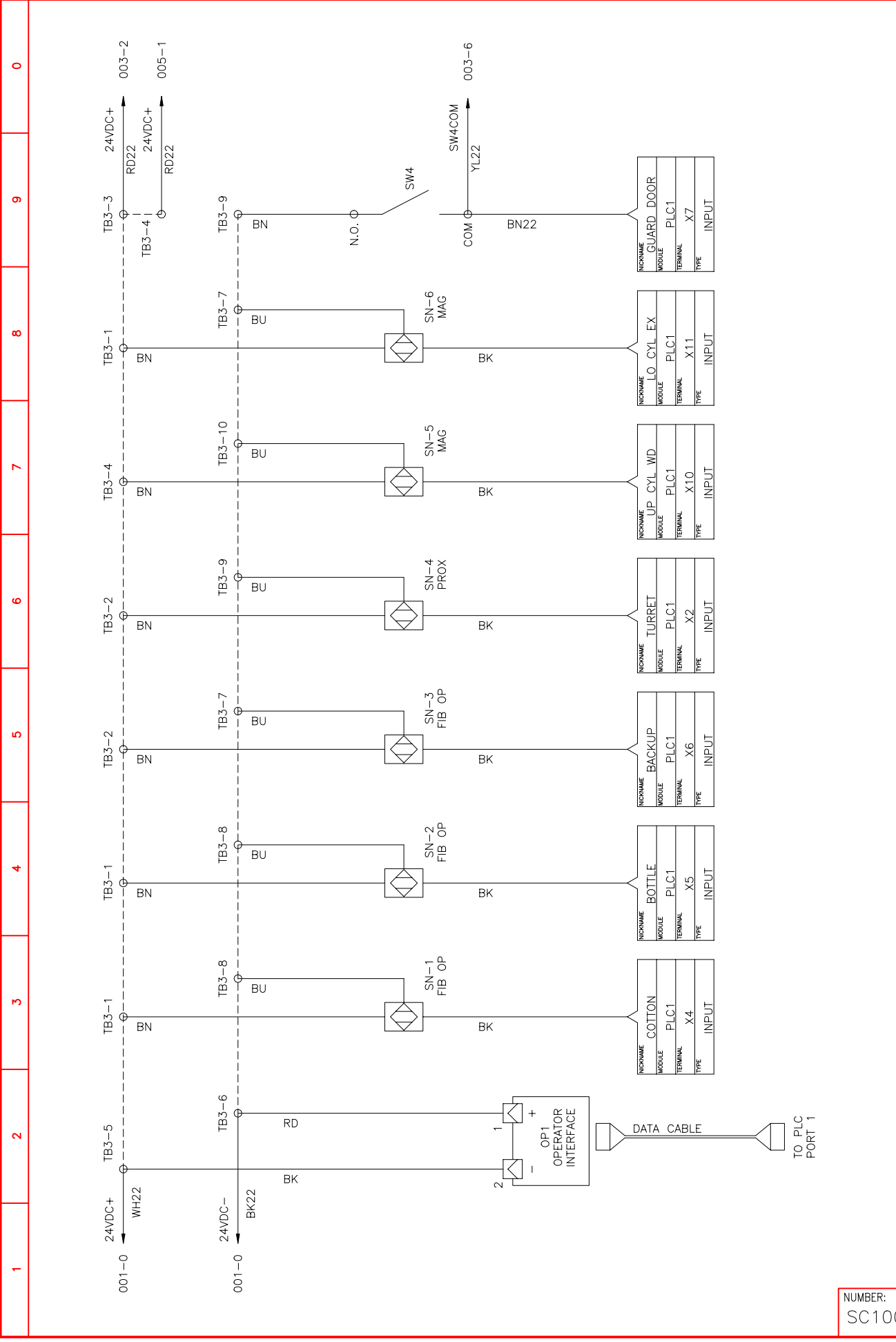
DEITZ COMPANY, INC.
ROUTE 34, WALL, N.J.

TECHNICAL DRAWING - PRODUCT INFO

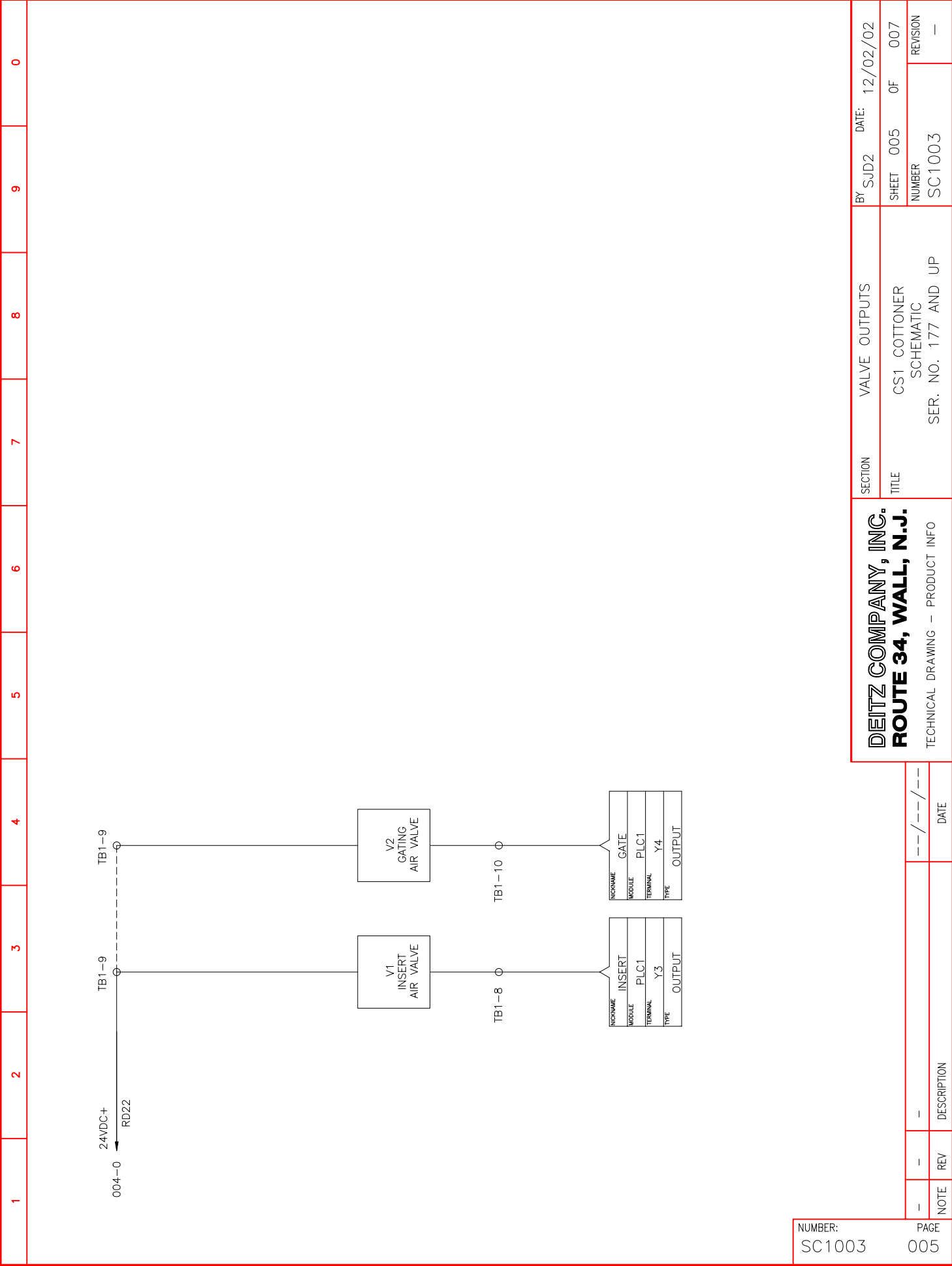
SECTION TURRET MOTOR
TITLE CS1 COTTONER SCHEMATIC
SER. NO. 177 AND UP

BY SJD2 DATE: 12/02/02
SHEET 002 OF 007
NUMBER SC1003 REVISION -

1	2	3	4	5	6	7	8	9	0
NOTE	REV	DESCRIPTION	DATE						



1	2	3	4	5	6	7	8	9	0
<p>SECTION: INTERFACE, INPUTS</p> <p>BY: SJD2 DATE: 12/02/02</p> <p>TITLE: CS1 COTTONER SCHEMATIC</p> <p>SHEET 004 OF 007</p> <p>NUMBER: SC1003</p> <p>REVISION: —</p>									
<p>DEITZ COMPANY, INC.</p> <p>ROUTE 34, WALL, N.J.</p> <p>TECHNICAL DRAWING — PRODUCT INFO</p>									
NOTE	REV	DESCRIPTION	DATE						
—	—	—	—/—/—						
NUMBER: SC1003		PAGE 004							



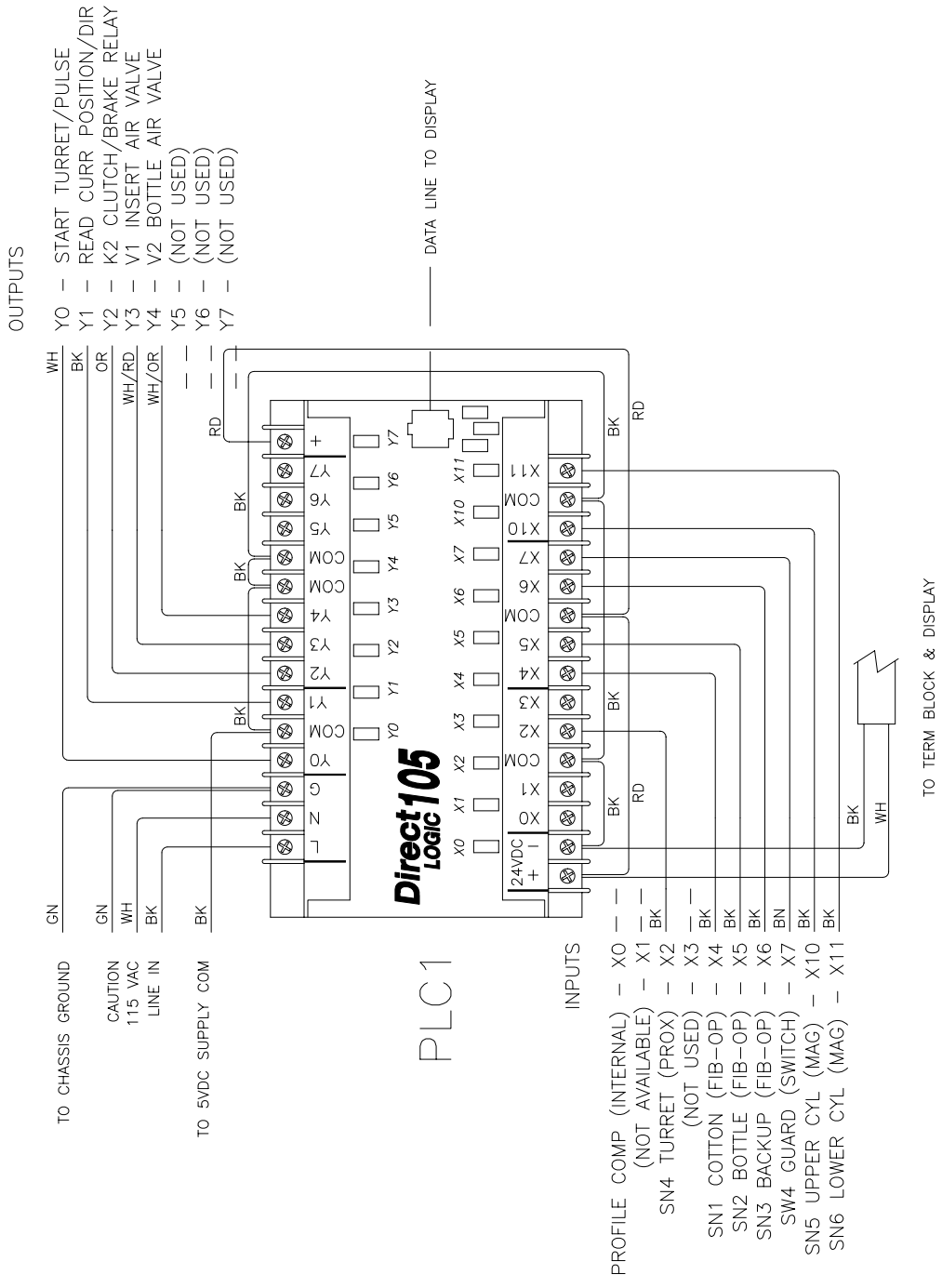
NUMBER: SC1003 PAGE 005

NOTE	REV	DESCRIPTION	DATE
-	-	-	--/--/---

DEITZ COMPANY, INC.
ROUTE 34, WALL, N.J.
 TECHNICAL DRAWING - PRODUCT INFO

SECTION VALVE OUTPUTS
 TITLE CS1 COTTONER SCHEMATIC
 SER. NO. 177 AND UP

BY SJD2 DATE: 12/02/02
 SHEET 005 OF 007
 NUMBER SC1003 REVISION -



ALSO SEE PAGE 005

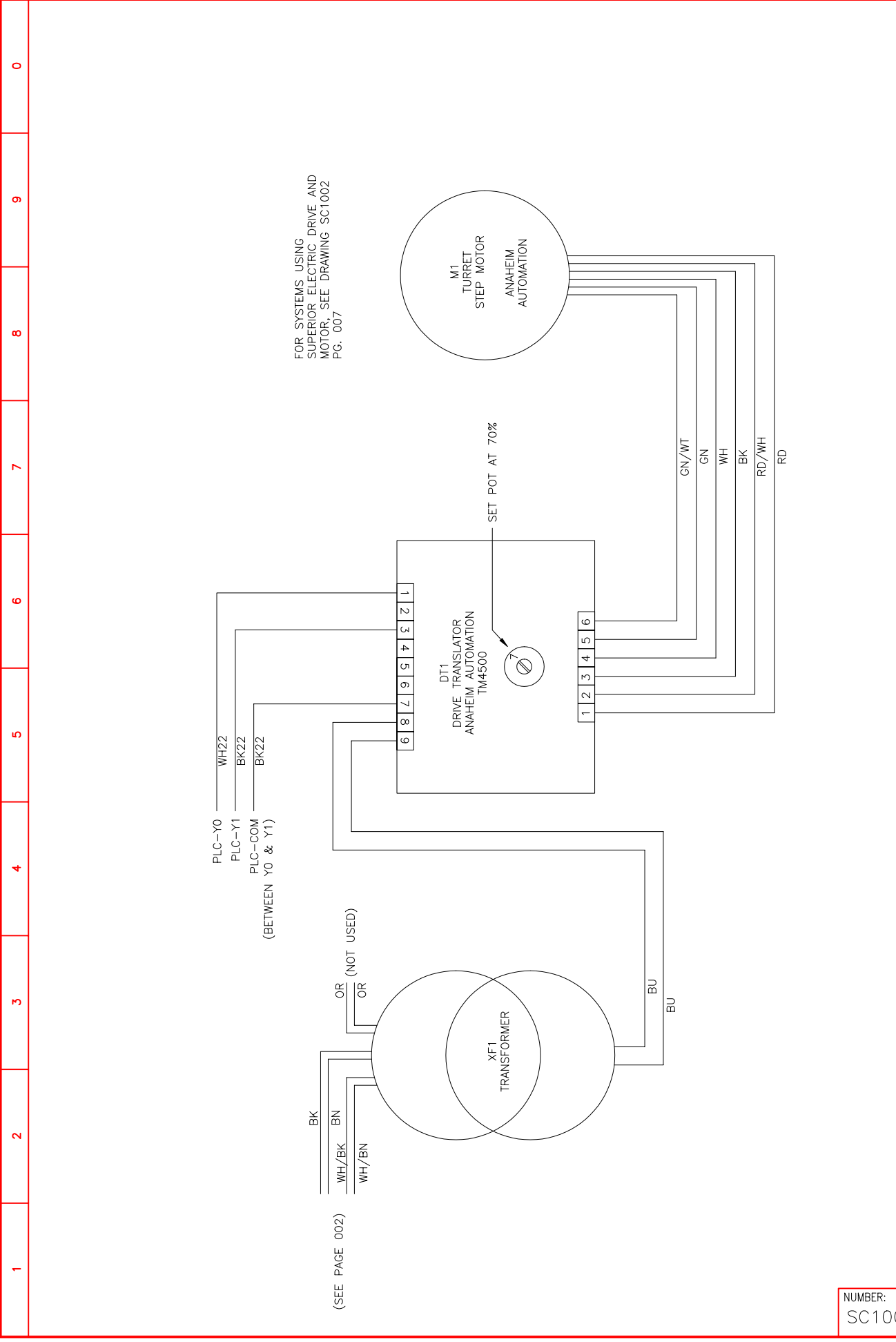
BY SJD		DATE: 12/02/02
SECTION		PLC DETAILS
TITLE		CS1 COTTONER SCHEMATIC
SER. NO. 177 AND UP		SC1003
NUMBER		006 OF 007
REVISION		—

DEITZ COMPANY, INC.
ROUTE 34, WALL, N.J.

TECHNICAL DRAWING - PRODUCT INFO

NUMBER:	PAGE
SC1003	006

NOTE	REV	DESCRIPTION	DATE
—	—	—	—/—/—



BY SJD		DATE: 12/02/02	
SECTION		TURRET DRIVE DETAILS	
TITLE		CS1 COTTONER SCHEMATIC	
SER. NO. 177 AND UP		SC1003	
NUMBER		SHEET 007 OF 007	
REVISION		-	

DEITZ COMPANY, INC.
ROUTE 34, WALL, N.J.

TECHNICAL DIAGRAM

NUMBER: SC1003
 PAGE 007

NOTE	REV	DESCRIPTION	DATE
-	-	-	---/---/---