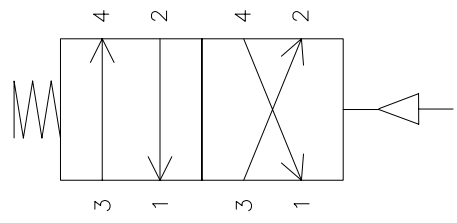


CONTENTS

1. NOTES AND REVISIONS
2. INLET/CONTROL VALVES
3. AIR CYLS: INSERT/PINCH/TAMP
4. AIR CYLS: GATING/ROLLERS

NOTES

TYPICAL AIR VALVE  
4 PORT/2 POSITION  
24 VDC

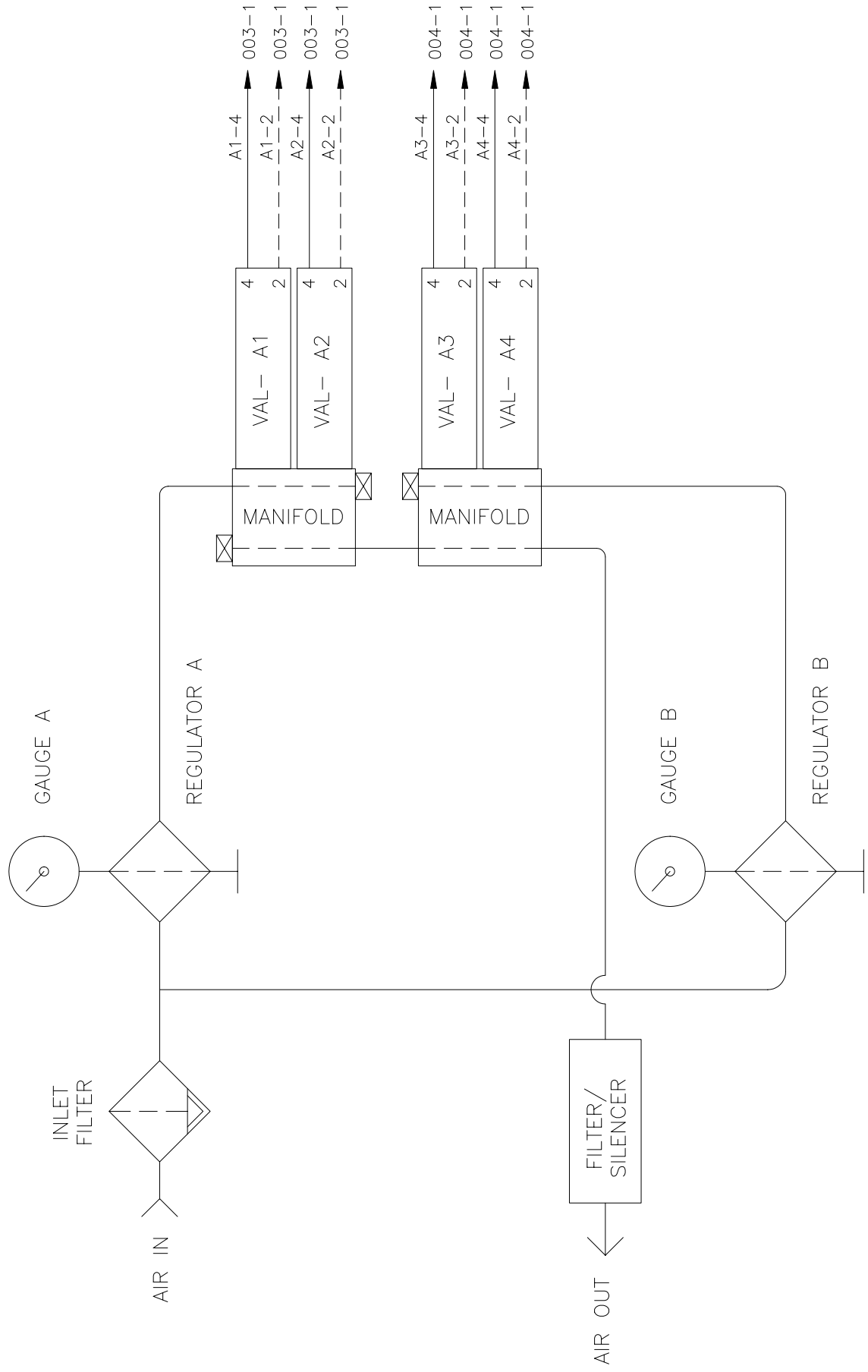


**DEITZ COMPANY, INC.**  
**ROUTE 34, WALL, N.J.**  
TECHNICAL DRAWING - PRODUCT INFO

SECTION TITLE  
NOTE AND REVISIONS  
MODEL CS2 COTTONER  
AIR LINE SCHEMATIC  
FROM SERIAL NO. 001

BY SJD2 DATE: 5-23-03  
SHEET 001 OF 004  
NUMBER SC1006 REVISION -

NOTE	REV	DATE
-	-	---/---/---

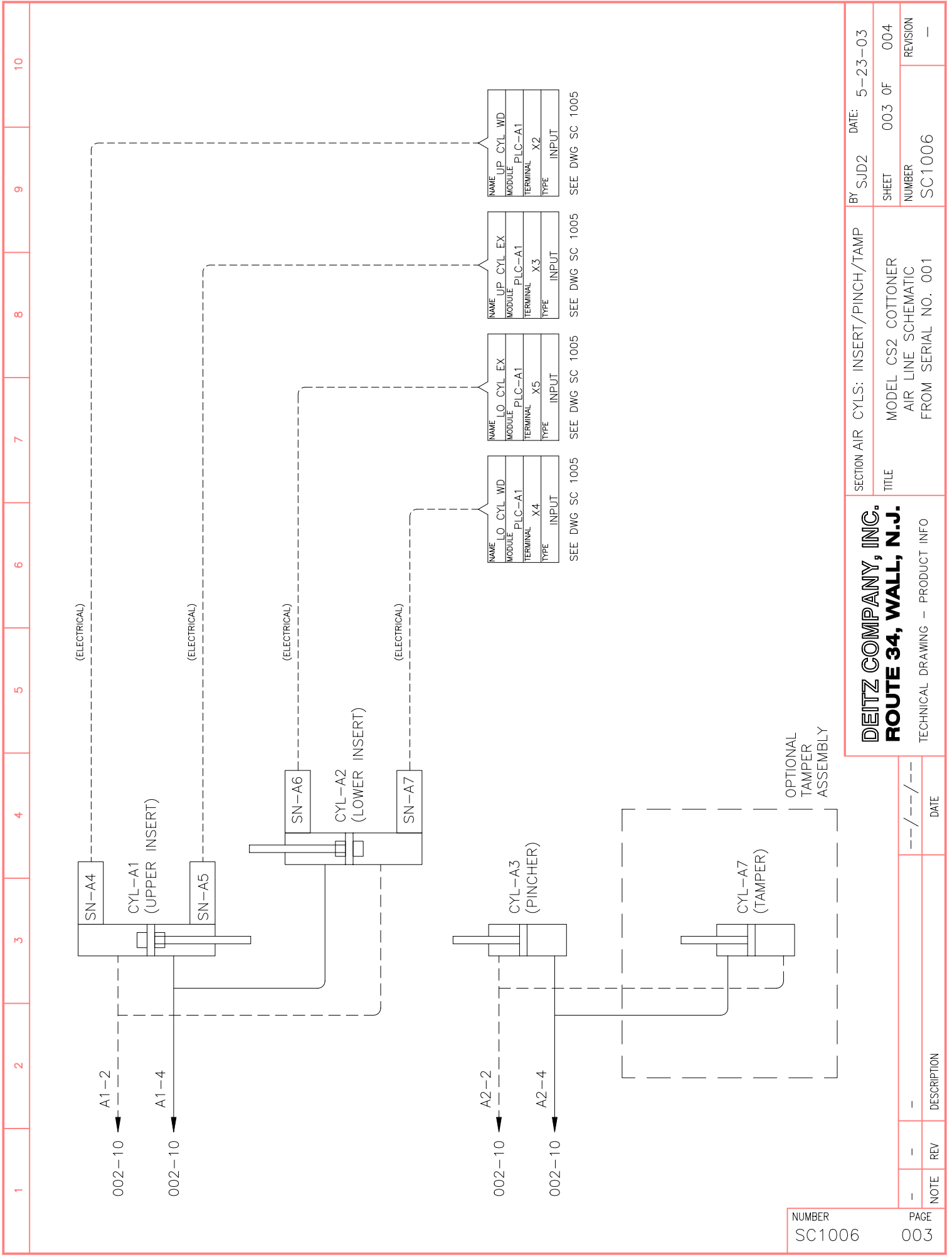


NUMBER	PAGE
SC1006	002

NOTE	REV	DESCRIPTION	DATE
-	-	-	---/---/---

**DEITZ COMPANY, INC.**  
**ROUTE 34, WALL, N.J.**  
 TECHNICAL DRAWING - PRODUCT INFO

SECTION	INLET/CONTROL VALVES	BY	DATE:
TITLE	MODEL CS2 COTTONER AIR LINE SCHEMATIC FROM SERIAL NO. 001	SJD2	5-23-03
		SHEET	002 OF 004
		NUMBER	SC1006
		REVISION	-



NAME	LO_CYL_WD
MODULE	PLC-A1
TERMINAL	X4
TYPE	INPUT

SEE DWG SC 1005

NAME	LO_CYL_EX
MODULE	PLC-A1
TERMINAL	X5
TYPE	INPUT

SEE DWG SC 1005

NAME	UP_CYL_EX
MODULE	PLC-A1
TERMINAL	X3
TYPE	INPUT

SEE DWG SC 1005

NAME	UP_CYL_WD
MODULE	PLC-A1
TERMINAL	X2
TYPE	INPUT

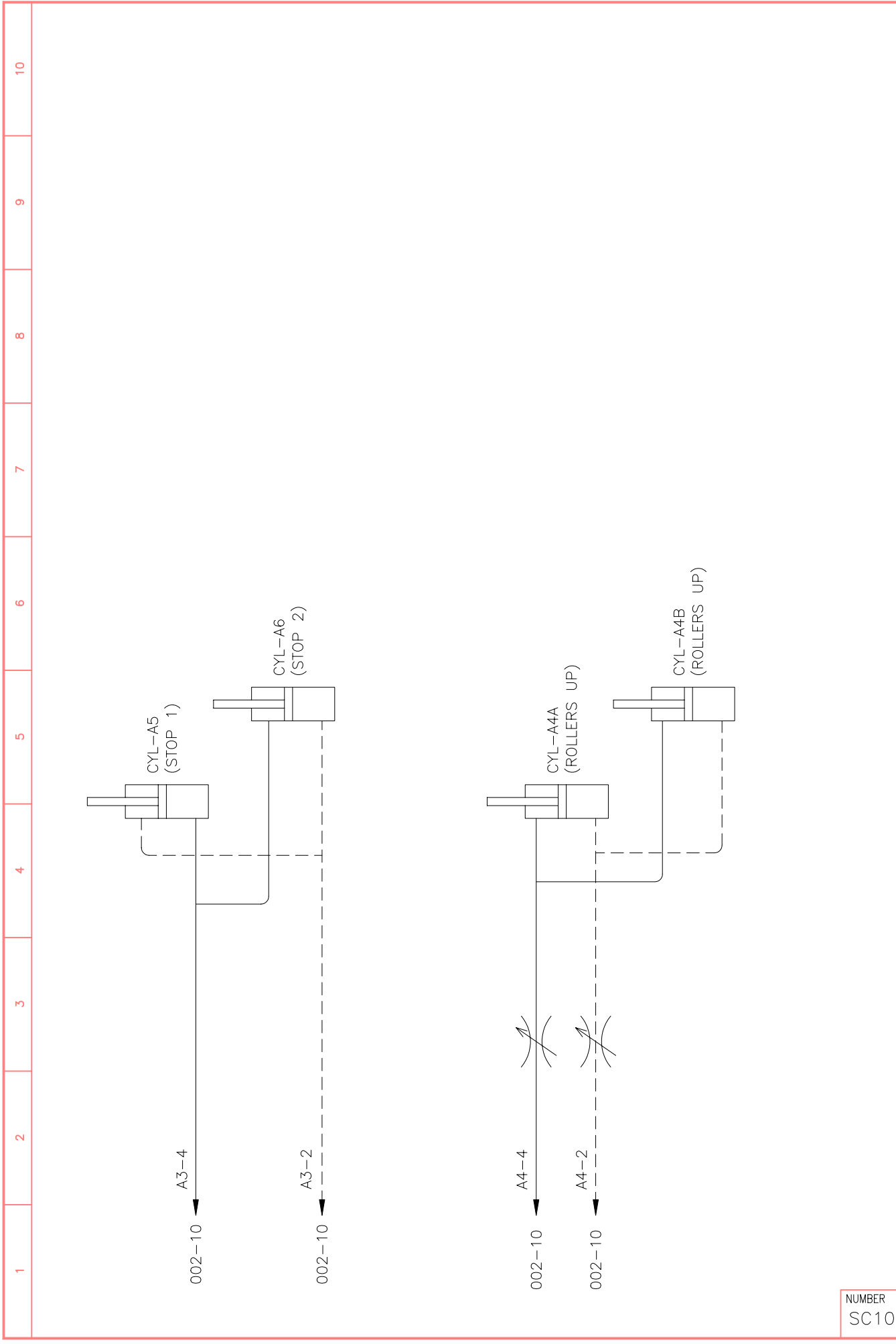
SEE DWG SC 1005

NUMBER	PAGE
SC1006	003

**DEITZ COMPANY, INC.**  
**ROUTE 34, WALL, N.J.**  
 TECHNICAL DRAWING - PRODUCT INFO

SECTION AIR	CYLS: INSERT/PINCH/TAMP	BY	SJD2	DATE:	5-23-03
TITLE	MODEL CS2 COTTONER AIR LINE SCHEMATIC FROM SERIAL NO. 001	SHEET	003 OF	004	REVISION
		NUMBER	SC1006		-

NOTE	REV	DESCRIPTION	DATE
-	-	-	---/---/---



NUMBER SC1006 PAGE 004

NOTE	REV	DESCRIPTION	DATE
-	-	-	---/---/---

**DEITZ COMPANY, INC.**  
**ROUTE 34, WALL, N.J.**  
 TECHNICAL DRAWING - PRODUCT INFO

SECTION AIR CYLS: GATING/ROLLERS  
 TITLE MODEL CS2 COTTONER  
 AIR LINE SCHEMATIC  
 FROM SERIAL NO. 001

BY SJD2 DATE: 5-23-03  
 SHEET 004 OF 004  
 NUMBER SC1006 REVISION -